

Marine Fisheries Insurance

Country Perspective

Ministry of Fisheries Marine Resources and Agriculture
Maldives



Importance of fisheries



Contribute food security



Employ 20% of the labour force



>95% of physical exports



Main economic activity in islands



Account for 6% of GDP



Fishing Industry

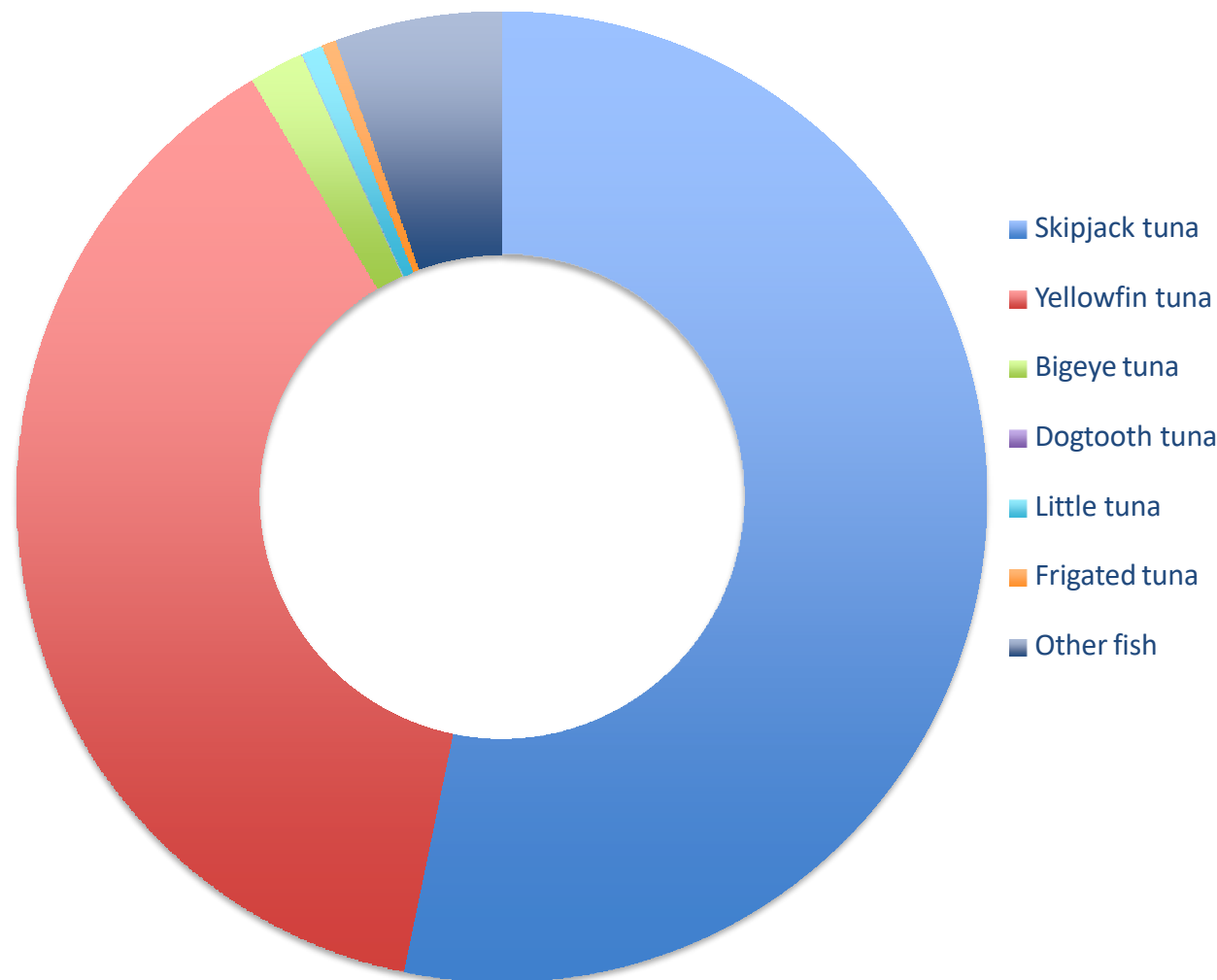


Tuna is the main harvest species

- Pole and line skipjack tuna fishery
- Handline yellowfin tuna fishery
- Longline fishery targeting bigeye tuna
- Subsistence based HL & troll fishery






90% of the landings are tuna and tuna like species



Insurance Schemes

- Life Insurance schemes
- Vessel Insurance Scheme
- Income based insurance schemes

Challenges





-  Administrative Burden in application and claim
-  Lack of transparency of the coverage and claim process
-  Trust, belief and culture

Vessel Insurance Scheme

- Mandatory Requirement for larger vessel registration
- Higher Premium
- Lack of transparency of the coverage and claim process

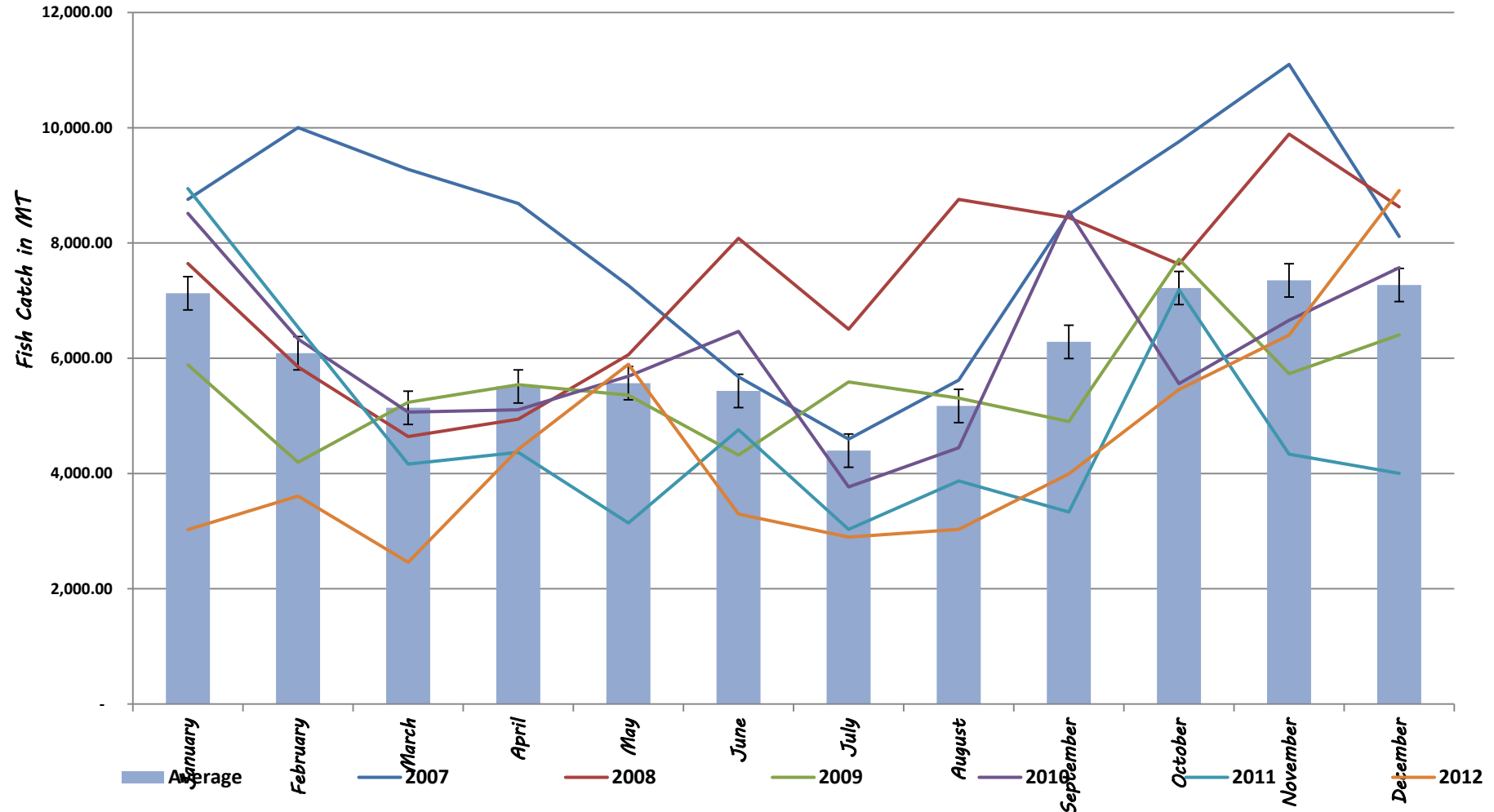
Income based Insurance Scheme

Income based Insurance Scheme- Purpose

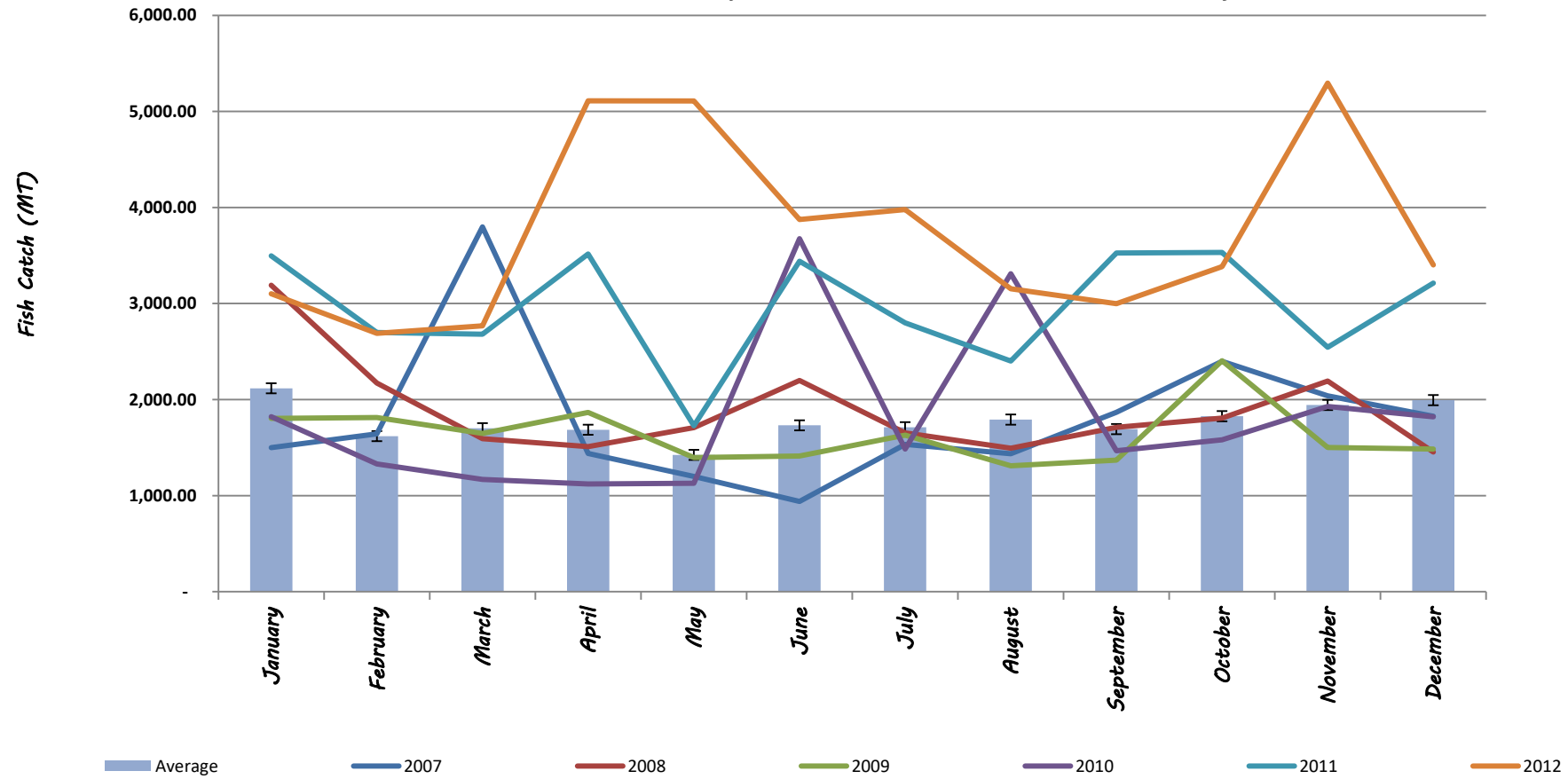
-  Financial compensation on low fishing season
-  Unexpected Price decline of fish in the market
-  Compensation for loss of fishing days due to the adverse weather condition
-  Compensation was provided for the months that the fishermen get below MVR10,000 per month

Income based Insurance Scheme

Fish catch per month - SKJ Pole and Line Fishery







Fish Catch per Month YFT Fishery



Average Monthly income of Fishermen

	> 85ft	65ft - 85ft	45ft – 65ft	<45ft
Avg. Crew	21	17	13	8
Avg. Monthly income	17,264.68	15,342.92	15,060.76	7,855.94

General Procedure

-  Fishermen has to pay a premium fee of MVR250 per month
-  If a vessel crew did not get MVR 10,000 per month, then they can claim to get insurance to pay compensation up to MVR 10,000
-  Compensation for no fishing days due to the sever weather condition
-  Compensation was provided for the months that the fishermen get below MVR10,000 per month

Challenges

- Administrative Burden in application and claim
- Too low compensation ceiling of MVR10,000
- Trust, belief and culture
- Difficult to expand implementation for artisanal fleet



Lesson Learned

- Information/ data coverage of fishing vessels fishermen need to increased
- Government intervention vital specially for small scale fishing vessels
- Need to formulate more attractive packages with more incentives
- Need to increase awareness knowledge of fishing communities



THANK YOU