

PANEL DISCUSSION

Future Proofing Small Scale Fisheries (SSF): Innovations in Fishing to Enhance Contribution of SSF to Food Security



Dr. Shiham Adam

*Director for Science and the Maldives
International Pole-and-Line Foundation*



IPNLF - MALDIVES
FOR ONE-BY-ONE FISHERS

  @ipnlf
#reimaginnetuna

Who are IPNLF?

Allied with our members, IPNLF works to develop, support and promote socially and environmentally responsible one-by-one tuna fisheries around the world.



Current Members



ACTEMSA



MIGROS



Embracing / Innovations for Selective & Environmentally Friendly Methods of Fishing

- *Net fishing - prevalent in the SSF world. Requires continuous innovation of new and more efficient designs and techniques of deployment and retrieval; live-release of non-target and ETP species to mitigate bycatch and improve overall productivity of small-scale fishing operations*
- *Value in embracing for more selective forms of fishing; PL, HL and TR where possible;*

Examples of innovations happening in the TUNA world - Sri Lanka; Pakistan, Vietnam, Oman - market driven incentives + the need for conservation and management target and dependent species.*

*Kiszka et al.(2021) - Setting the net lower: A potential low-cost mitigation method to reduce cetacean bycatch in drift gillnet fisheries; Aquatic Conservation: <https://doi.org/10.1002/aqc.3706>



Onboard Handling and Cold Chain Management

- Onboard handling of catch; cold chain management - to reduce waste and maintain value of the catch
- Creating awareness of among the fishers on the importance of proper onboard handling
- Developing infrastructure to enable for easy and affordable ice for fishers- Maldives example.
- Ongoing Project: Establishing solar ice makers in Indonesia - IPNLF Project under UNDP/OIC support



Market Access / Improving Market Linkages

- *Sustainable Development Goal 14.b (SDG14.b) calls for providing 'access for small-scale fishers to marine resources and markets' by 2030*
- *Sustained market access for small-scale fishers is essential to safeguard fishers from issues such as insufficient pay and livelihood insecurity.*
- *access for small-scale fishers is essential to safeguard fishers from issues such as insufficient pay and livelihood insecurity.*

FUTURE PROOFING SOLUTIONS:

- *Companies need to make positive investments into supply chains, and take steps to source seafood in a manner that best helps advance social equity and safeguards livelihoods.*
- *Companies need to ensure that any price premiums paid for responsible seafood products translate to increased pay for fishers rather than being absorbed by other supply chain actors.*



Market Access / Improving Market Linkages

- Ecolabelling; done by a fisher representative group (fishery association)l ; but expensive, may need cheaper alternatives.*
- Role of the market - incentivizing ecolabel driving sustainability*
- Traceability & Transparency*

EXAMPLES

- IPNF - Sourcing Transparency Platform (STP)*
- Abalobi (Storied fish) - South Africa*
- Captain Fresh (Indian Company - B2B platform leveraging technology to deliver fastest harvest-to-retail in the industry.*
- Use of FinTech Solution: Increasing Economic Gains for Women in the Maldives - UNDP/OIC project*
- Fishery Information System (FIS) - Maldives, with inbuilt traceability*



Use of Digital Technology

- *PFZ Advisory - INCOIS started some years ago, now evolved in providing advisory via mobile apps*
- *Use of electronics in locating fish schools in real time; echo sounder (fish finder), sonar, bird radars, various forms binoculars*
- *Electronic Data capture; fisheries monitoring; research and management.*
- *Electronic Monitoring (use of camera on board) is being hailed means to replace fishery observers; may be cost-prohibitive in SSF (at least for the time being)*

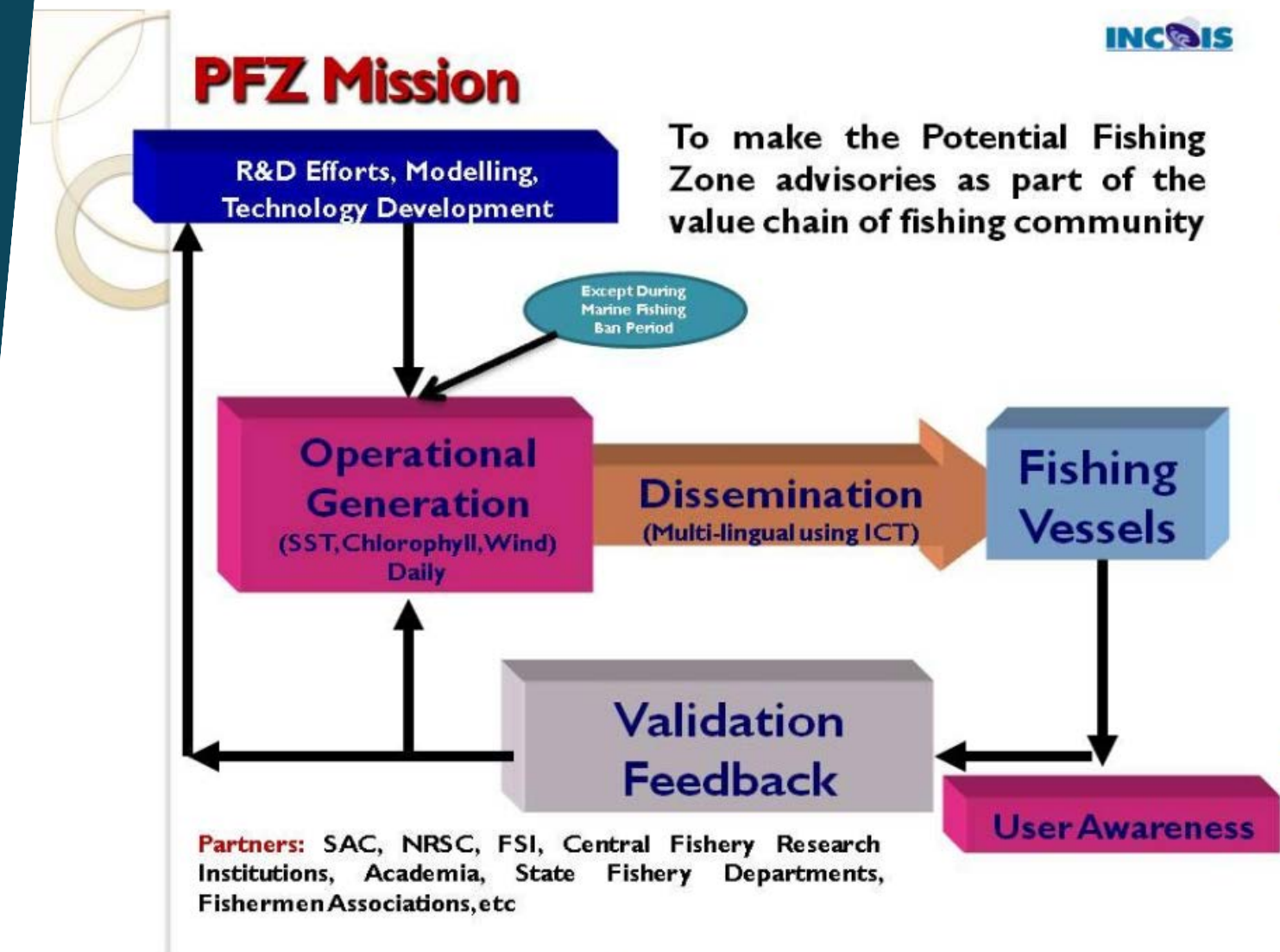
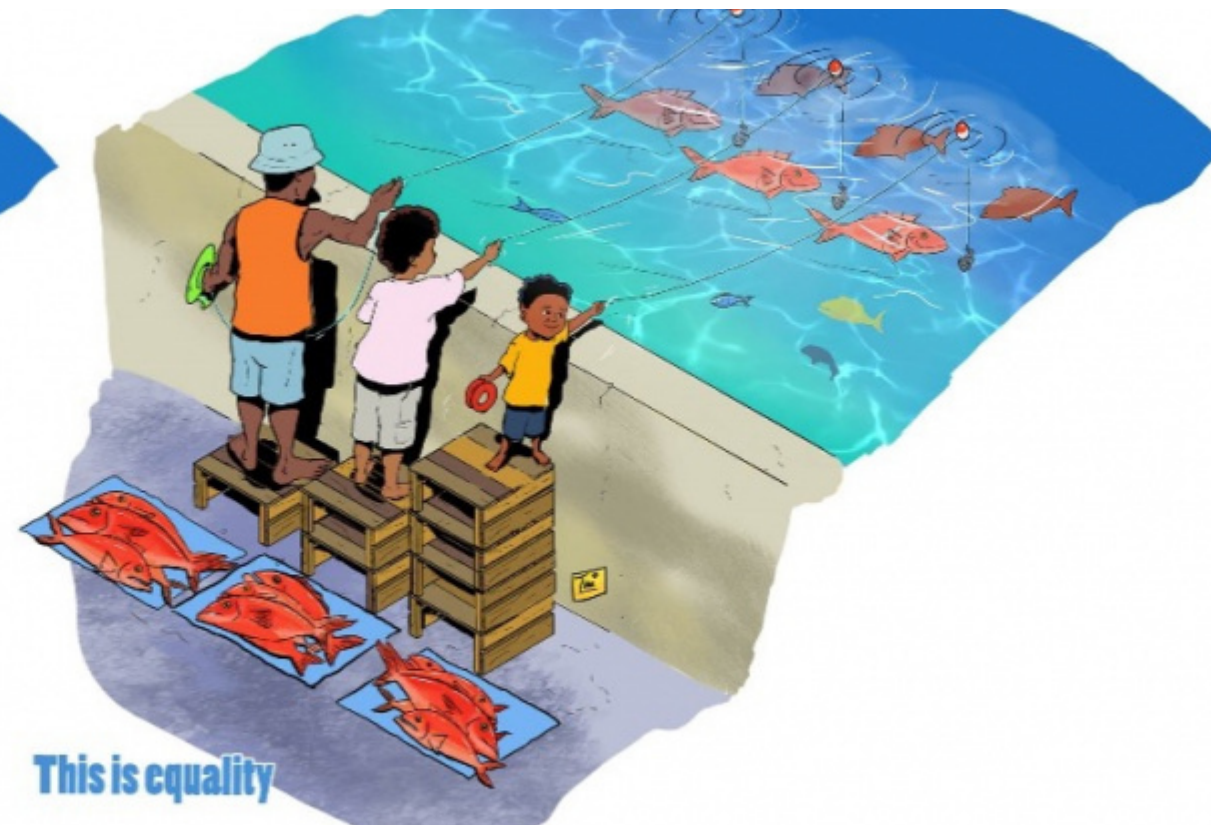


Figure: Mission of PFZ service and flow diagram of its operational process

Social Responsibility



This is **NOT** equality
Equal inputs = unequal outcomes



This is equality
Equity in inputs = equality in outcomes

Equality vs Equity

If we want equality in outcomes from fisheries development, we may need to provide different resources or different amounts of resources to different groups in the community. This may mean the intervention is unequal, but the end result is greater equality across groups in society.

Social Responsibility

Small-scale fisheries are essential for supporting the livelihoods of approximately 379 million people, Provides 40% of the global catch and 90% of the total employment in the sector. Yet, small-scale fishers receive the smallest economic benefit in terms of the amount of money they earn for their products compared to other supply chain actors.

Future Proofing Focus Areas

- Decent Work - freedom & Safety*
- Low entry barriers to the industry - social norms*
- Access to Markets - verification*
- Access to finance, insurance and other inputs*
- Access to social services that underpin production and well being - education, health care, and social protection*
- Living income - distribution of price / premiums across the supply chain*
- Transparency in supply chain - price information & working conditions*

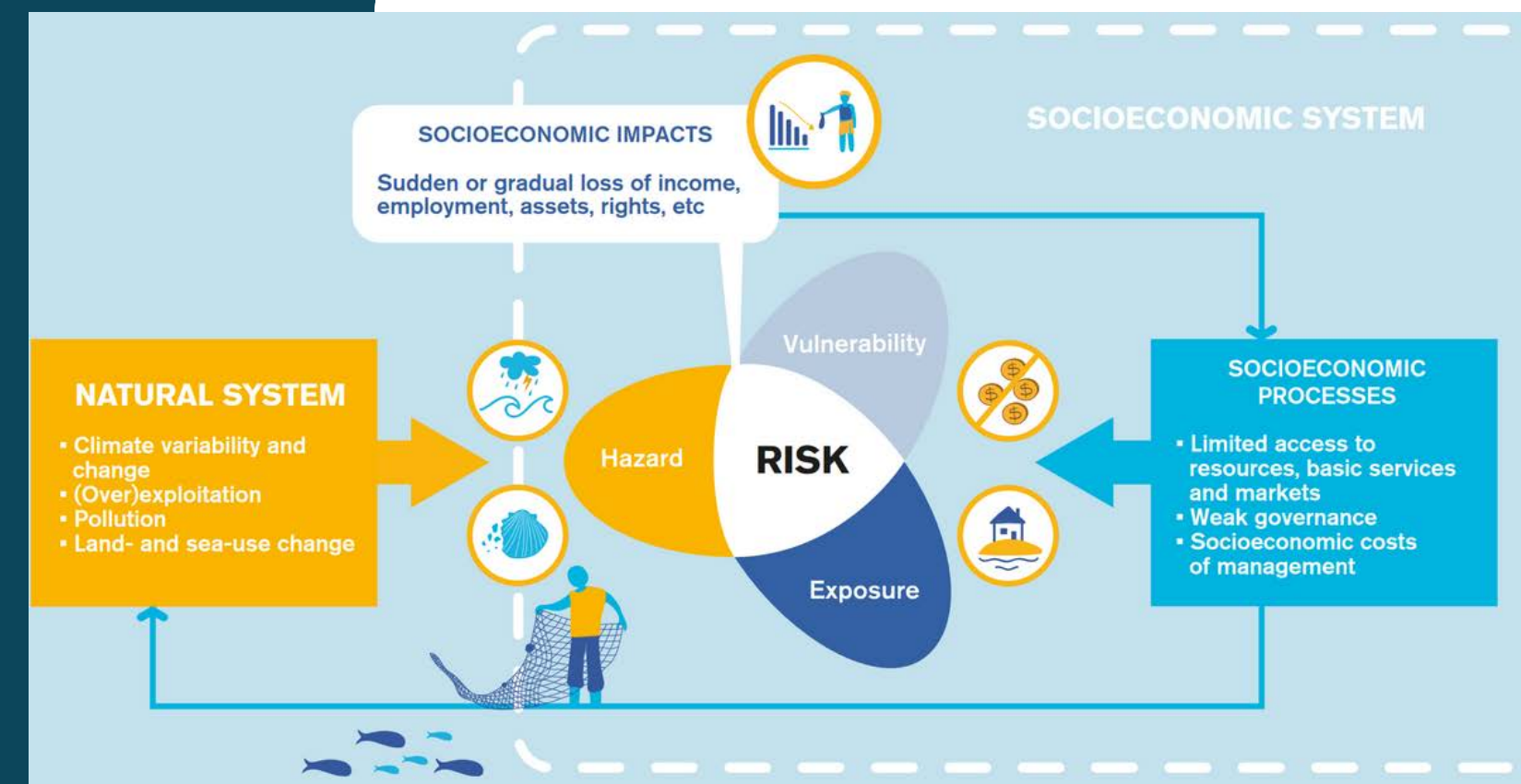


Connecting Social Protection and Fisheries Management for Sustainability

- Small-scale fishing communities face increasingly high levels of social-ecological risk, particularly in the global South.
- Living and working on the front lines of climate change and reliant on often declining resources, they are highly exposed to ecological hazards and vulnerable to a range of shocks and stresses arising from both natural and socioeconomic systems.
- Social protection can help people manage risk but provision is limited.
- Aligning social protection and labour programmes with fisheries management can enable and incentivise actions that enhance sustainability, while building resilience.

Increasing the visibility of people in small-scale artisanal fisheries and aquaculture

IIED - International Institute for Environment and Development - IYAFA Brochure



Thank you

