



# 2017



## Fish in Art, Craft and Culture

Fish is not only liked on the plate but is also a much desired subject in art, craft and culture.

Fish (Pisces) is one of the 12 zodiac signs. Indian mythology has several stories centred on fish.

Many ancient civilizations depicted fish in their insignia and currency coins.

And fish is also part of popular folklore in the Bay of Bengal region.

The 2017 BOBP-IGO Table Calendar brings out an invaluable collection of art and craft portraying

fish from its member-countries – like stitch craft (Kantha) in Bangladesh, currency notes in the

Maldives, and paintings in India (Madhubani) and Sri Lanka (Batik).

This Calendar marks a wonderful and unique tribute to the contribution of fishes to mankind.



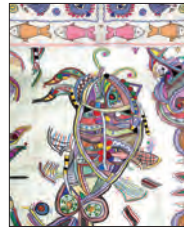
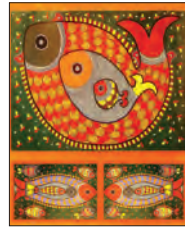
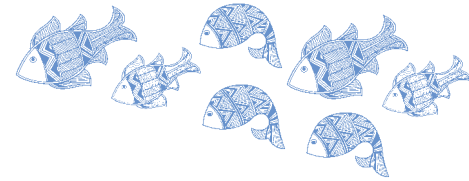
Post Bag No. 1054, 91, St. Mary's Road, Abhiramapuram, Chennai 600 018, India.

Phone: 91-44-24936188, 24936294; Fax: 91-44-24936102

E-mail: [info@bobbigo.org](mailto:info@bobbigo.org); Website: [www.bobbigo.org](http://www.bobbigo.org); [www.oppbob.org](http://www.oppbob.org)

# 2017

## Fish in Art, Craft and Culture



*Published by Y S Yadava for BOBP-IGO*

*Design by S Jayaraj*

*Madhubani by N K Jha (paintingofmithila@gmail.com)*

*Printed at L S Graphic Prints, Chennai.*

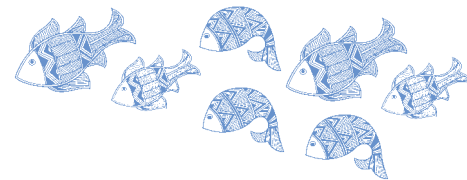
# 2017



The Bay of Bengal Programme Inter-Governmental Organisation (BOBP-IGO), successor to the BOBP, was set up in Chennai, India in April 2003. It assists the Governments of Bangladesh, India, Maldives and Sri Lanka and also other countries in the region in improving the conditions of small-scale fisherfolk communities. The core activities of the Organisation include technical investigations, capacity building in safety at sea, MCS (monitoring, control and surveillance), EAFM (Ecosystem Approach to Fisheries Management), management plans for shared regional resources (hilsa, shark), promotion of the Code of Conduct for Responsible Fisheries, climate change and its impact on fisheries, networking, awareness creation and knowledge sharing. (<http://www.bobpigo.org>)



The Bay of Bengal Regional Project is part of the “Ocean Partnerships for Sustainable Fisheries and Biodiversity Conservation – Models for Innovation and Reform” Project (OPP-BOB) funded by the World Bank through a grant received from the Global Environment Facility Trust Fund. Implemented by the Bay of Bengal Programme Inter-Governmental Organisation (BOBP-IGO) in its member-countries, the OPP-BOB proposes to develop appropriate management plans for tuna and tuna-like fisheries with business case(s) to support its implementation. The Project recognises that the challenges of fisheries management require effective collaboration and coordination and, therefore, works with a full range of stakeholders at international, national and local levels. (<http://www.oppbob.org>)



Post Bag No. 1054, 91, St. Mary's Road, Abhiramapuram, Chennai 600 018, India.  
Phone: 91-44-24936188, 24936294; Fax: 91-44-24936102  
E-mail: [info@bobpigo.org](mailto:info@bobpigo.org); Website: [www.bobpigo.org](http://www.bobpigo.org); [www.oppbob.org](http://www.oppbob.org)  
Facebook: <https://www.facebook.com/BOBPIGO>

# 2017



## JANUARY

SUN MON TUE WED THU FRI SAT

1	2	3	4	5	6	7
8	9	10	11	12	13	14
15	16	17	18	19	20	21
22	23	24	25	26	27	28
29	30	31				

Bangladesh- Stitch craft (Kantha)  
Credit: Private collection







# 2017



## FEBRUARY

SUN MON TUE WED THU FRI SAT

			1	2	3	4
5	6	7	8	9	10	11
12	13	14	15	16	17	18
19	20	21	22	23	24	25
26	27	28				

India- Madhubani painting  
Credit: Neeraj Kumar Jha





# 2017



## MARCH

SUN	MON	TUE	WED	THU	FRI	SAT
			1	2	3	4
5	6	7	8	9	10	11
12	13	14	15	16	17	18
19	20	21	22	23	24	25
26	27	28	29	30	31	

Only for display

Maldives- Currency note





# 2017



## APRIL

SUN MON TUE WED THU FRI SAT

30

1

2

3

4

5

6

7

8

9

10

11

12

13

14

15

16

17

18

19

20

21

22

23

24

25

26

27

28

29

Sri Lanka- Batik painting  
Credit: Private collection







# 2017



## MAY

SUN MON TUE WED THU FRI SAT

	1	2	3	4	5	6
7	8	9	10	11	12	13
14	15	16	17	18	19	20
21	22	23	24	25	26	27
28	29	30	31			

Bangladesh- Stitch craft (Kantha)  
Credit: Private collection







# 2017



## JUNE

SUN MON TUE WED THU FRI SAT

				1	2	3
4	5	6	7	8	9	10
11	12	13	14	15	16	17
18	19	20	21	22	23	24
25	26	27	28	29	30	

India- Madhubani painting  
Credit: Neeraj Kumar Jha



# 2017



## JULY

SUN MON TUE WED THU FRI SAT

30	31					1
2	3	4	5	6	7	8
9	10	11	12	13	14	15
16	17	18	19	20	21	22
23	24	25	26	27	28	29

Maldives- Currency note



Only for display





# 2017



## AUGUST

SUN MON TUE WED THU FRI SAT

		1	2	3	4	5
6	7	8	9	10	11	12
13	14	15	16	17	18	19
20	21	22	23	24	25	26
27	28	29	30	31		

Sri Lanka- Batik painting  
Credit: Private collection







# 2017



## SEPTEMBER

SUN MON TUE WED THU FRI SAT

					1	2
3	4	5	6	7	8	9
10	11	12	13	14	15	16
17	18	19	20	21	22	23
24	25	26	27	28	29	30

Bangladesh- Stitch craft (Kantha)  
Credit: Private collection





# 2017



## OCTOBER

SUN MON TUE WED THU FRI SAT

1	2	3	4	5	6	7
8	9	10	11	12	13	14
15	16	17	18	19	20	21
22	23	24	25	26	27	28
29	30	31				

India- Madhubani painting  
Credit: Neeraj Kumar Jha





# 2017



## NOVEMBER

SUN MON TUE WED THU FRI SAT

			1	2	3	4
5	6	7	8	9	10	11
12	13	14	15	16	17	18
19	20	21	22	23	24	25
26	27	28	29	30		

Maldives- Currency note







# 2017



## DECEMBER

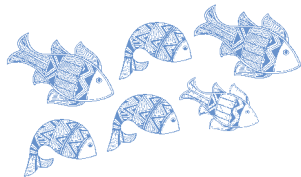
SUN MON TUE WED THU FRI SAT

31					1	2
3	4	5	6	7	8	9
10	11	12	13	14	15	16
17	18	19	20	21	22	23
24	25	26	27	28	29	30

Sri Lanka- Batik painting  
Credit: Private collection



# 2018



JANUARY						FEBRUARY						MARCH						APRIL					
SUN		7	14	21	28	SUN		4	11	18	25	SUN		4	11	18	25	SUN	1	8	15	22	29
MON	1	8	15	22	29	MON	5	12	19	26		MON	5	12	19	26		MON	2	9	16	23	30
TUE	2	9	16	23	30	TUE	6	13	20	27		TUE	6	13	20	27		TUE	3	10	17	24	
WED	3	10	17	24	31	WED	7	14	21	28		WED	7	14	21	28		WED	4	11	18	25	
THU	4	11	18	25		THU	1	8	15	22		THU	1	8	15	22	29	THU	5	12	19	26	
FRI	5	12	19	26		FRI	2	9	16	23		FRI	2	9	16	23	30	FRI	6	13	20	27	
SAT	6	13	20	27		SAT	3	10	17	24		SAT	3	10	17	24	31	SAT	7	14	21	28	
MAY						JUNE						JULY						AUGUST					
SUN		6	13	20	27	SUN		3	10	17	24	SUN	1	8	15	22	29	SUN		5	12	19	26
MON		7	14	21	28	MON	4	11	18	25		MON	2	9	16	23	30	MON		6	13	20	27
TUE	1	8	15	22	29	TUE	5	12	19	26		TUE	3	10	17	24	31	TUE		7	14	21	28
WED	2	9	16	23	30	WED	6	13	20	27		WED	4	11	18	25		WED	1	8	15	22	29
THU	3	10	17	24	31	THU	7	14	21	28		THU	5	12	19	26		THU	2	9	16	23	30
FRI	4	11	18	25		FRI	1	8	15	22	29	FRI	6	13	20	27		FRI	3	10	17	24	31
SAT	5	12	19	26		SAT	2	9	16	23	30	SAT	7	14	21	28		SAT	4	11	18	25	
SEPTEMBER						OCTOBER						NOVEMBER						DECEMBER					
SUN	30	2	9	16	23	SUN		7	14	21	28	SUN		4	11	18	25	SUN	30	2	9	16	23
MON		3	10	17	24	MON	1	8	15	22	29	MON		5	12	19	26	MON	31	3	10	17	24
TUE		4	11	18	25	TUE	2	9	16	23	30	TUE		6	13	20	27	TUE		4	11	18	25
WED		5	12	19	26	WED	3	10	17	24	31	WED		7	14	21	28	WED		5	12	19	26
THU		6	13	20	27	THU	4	11	18	25		THU	1	8	15	22	29	THU		6	13	20	27
FRI		7	14	21	28	FRI	5	12	19	26		FRI	2	9	16	23	30	FRI		7	14	21	28
SAT	1	8	15	22	29	SAT	6	13	20	27		SAT	3	10	17	24		SAT	1	8	15	22	29